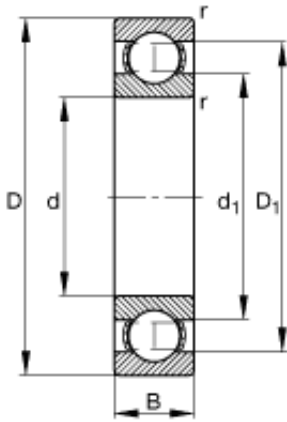




AMERICAN BEARING MFG.CORP.

25 mm x 47 mm x 12 mm GE90ES-2RS Bearing

Bearing No. 6005



6005 Bearing 2D drawings and 3D CAD models

Size	25x47x12 mm
Bore Diameter	25 mm
Outer Diameter	47 mm
Width	12 mm
d	25 mm
D	47 mm
B	12 mm
D ₁	40,2 mm
D _{a max}	43,8 mm
d ₁	32 mm
d _{a min}	28,2 mm
r _{a max}	0,6 mm
r _{min}	0,6 mm
m	0,081 kg / Weight
C _r	10700 N / Dynamic load rating (radial)
C _{0r}	5800 N / Static load rating (radial)
n _G	22100 1/min / Limiting speed
n _B	15200 1/min / Reference speed
C _{ur}	295 N / Fatigue limit load, radial